

African Educational Safaris



Introduction to Conservation
and Wildlife Behavior



Accommodation

Bungalows in Kruger Park



The Lodge in Hazyview



The Lodge in the Sabi Sands

Basic Program Outline

Pretoria – 2 days

- WBRC Frozen Zoo
- Pretoria Zoo

Hazyview- 3 days

- Elephant Sanctuary
- Moholoholo Rehab Centre
- Rhino Sanctuary

Kruger park – 4 days

- Largest National Park in South Africa

Sabi Sands – 6 days

- Private Game Reserve
(location of most tracking and animal behavior education)



Destinations

- Kruger National Park
- Sabi Sands Private Game Reserve
- Moholoholo Wildlife Rehabilitation Center
- Rhino Sanctuary
- Elephant Sanctuary
- WBRC Frozen Zoo
- Blyde River Canyon



Pretoria



The Lodge in Pretoria

The type of rooms



WBRC Frozen Zoo



Hazyview Adventure Lodge



Elephant sanctuary



Rhino sanctuary

At the rhino sanctuary you will learn more about white rhino and their fight to survive. How unique people are trying everything in their power to prevent this animal from going extinct.



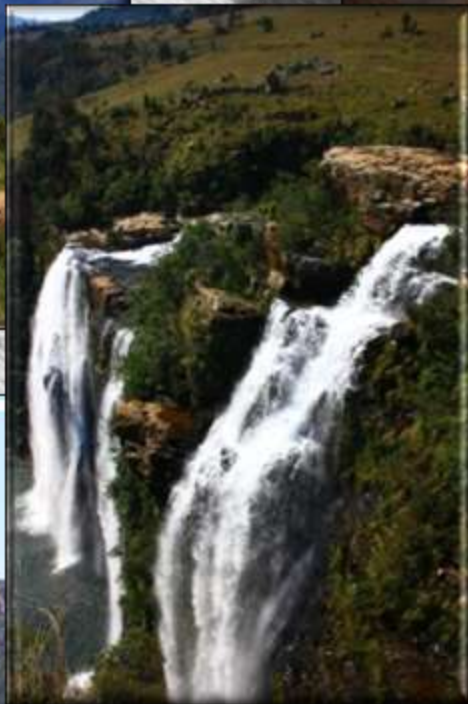
Moholoholo Rehab Center



Moholoholo Rehab Center



Blyde River Canyon



Kruger National Park Pretoriuskop Camp



Kruger National Park Activities



Sabi Sands Private Game Reserve





**A Unique
Hands-on
Experience**

**Not Your
Average
Classroom
Environment**



Topics Covered During Course

- **Wildlife Management Philosophies.**
- **Conflicts between man and animals.**
- **Tracking of African Animals.**
- **Mammal Identification and Study of Animal Behavior.**
- **Basic Survival Principles.**
- **Interesting Facts on a variety of Avian Species.**
- **Introduction to:**
 - **Geology, Botany, Ecology and many other “Ology’s”**



Activities in Sabi Sands

- Night Drives and Observation of Nocturnal Species
- Bush Walks
- Morning Drives
- Field Observations
- Tracking
- Making moulds of animal tracks
- Cultural Experience
- Placing and Monitoring Camera Traps
- Educational Lectures and Modules



Activities







BUSH WALKS







MORNING DRIVES







NIGHT DRIVES





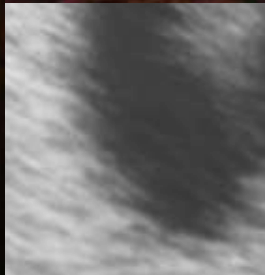
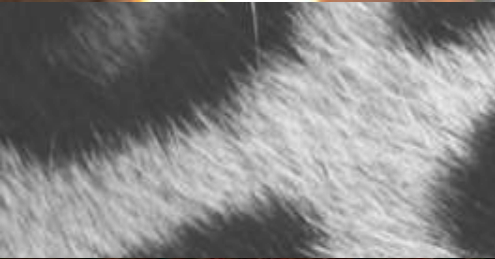
SUNDOWNERS IN THE BUSH





CHANGING TIRES







BRUNCH



Focus Mammals

Behavior, Language, Identification and Tracking, Population Dynamics, Conservation and Wildlife Management issues. These are some of the focus mammals;

- **Elephants**
- **Leopards**
- **Lions**
- **Rhinos**
- **Buffalo**
- **...and more**

The Big Five



Tentative Program Dates

- May 16 - 30
- June 6 - 20
- June 26 – July 10
- July 16 - 30



How much will this cost?



Around \$5500.00 and it includes airfare, university fees. Scholarships are available, you just need to ask.

What's included in trip cost:

- Accommodation
 - Transport within South Africa
 - Main Meals (with juice, tea, coffee)
 - Entrance Fees for Parks, Zoos, etc
 - Guest Lecturers
 - Game Drives
 - All planned activities within parks
- Not included:
 - Alcohol
 - Misc beverages
 - Snacks
 - Souvenirs
 - Tips/Laundry



Contact Details

Andrew Schaefer

- Email:
andrewschaef@gmail.com
- closeprotect@gmail.com
- Phone: 217 372 1579 USA
- Phone: 00127137412203 SA

